

Dinwiddie County

Wooded Parcels 20 to 33

Acres on a Quiet Country

Dead End Road

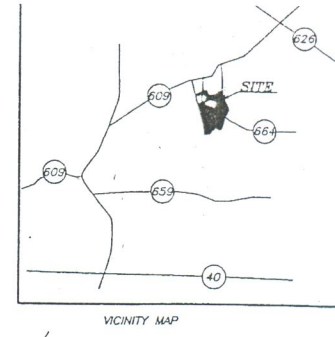


EASTERN WOODLANDS CORPORATION

HOMESTAYE INC.

LOG HOMES

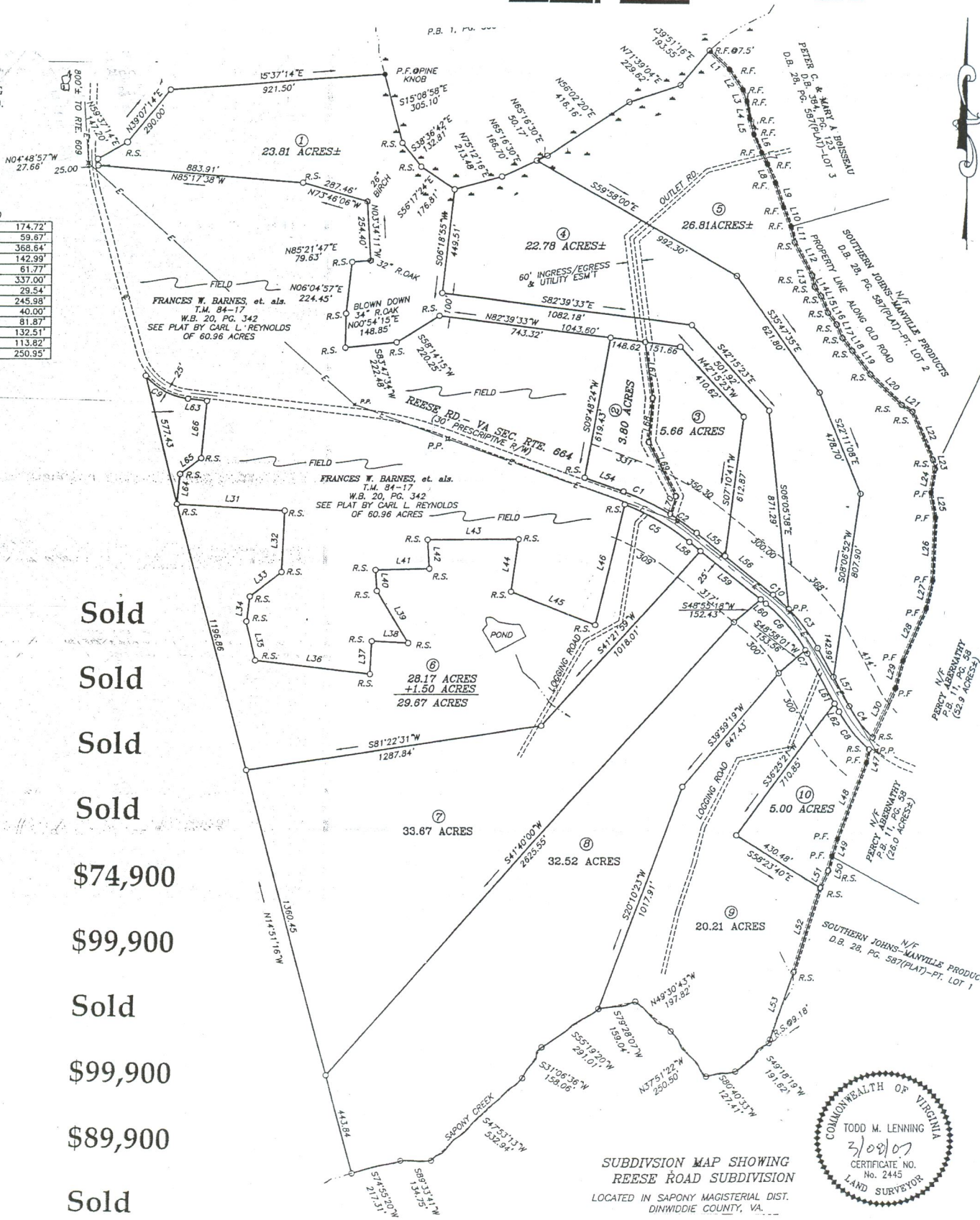
Jon Reisman
 Certified Forester #1971
 Post Office Box 1570
 16430 Sunnybrook Road
 Petersburg, VA 23805
 804.733.9330 Office
 804.733.9332 Fax
 804.691.8796 Mobile
 www.EasternWoodlands.us



LENNING LAND SURVEYING
 2126 LEWISTON PLANK RD.
 BURKEVILLE VA 23922
 434-767-9940

LINE TABLE FOR REESE ROAD

L54	S89°26'23"E	174.72'
L55	S51°19'11"E	59.67'
L56	S51°19'11"E	368.64'
L57	S28°18'46"E	142.99'
L58	S51°19'11"E	61.77'
L59	S51°19'11"E	337.00'
L60	S51°19'11"E	29.54'
L61	S28°18'46"E	245.98'
L62	S28°18'46"E	40.00'
L63	S83°31'08"E	81.87'
L64	N05°34'37"E	132.51'
L65	N51°56'53"E	113.82'
L66	N05°07'01"E	250.95'



- Lot 1 Sold
- Lot 2 Sold
- Lot 3 Sold
- Lot 4 Sold
- Lot 5 \$74,900
- Lot 6 \$99,900
- Lot 7 Sold
- Lot 8 \$99,900
- Lot 9 \$89,900
- Lot 10 Sold

SUBDIVISION MAP SHOWING
 REESE ROAD SUBDIVISION
 LOCATED IN SAPONY MAGISTERIAL DIST.
 DINWIDDIE COUNTY, VA.

